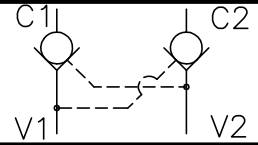
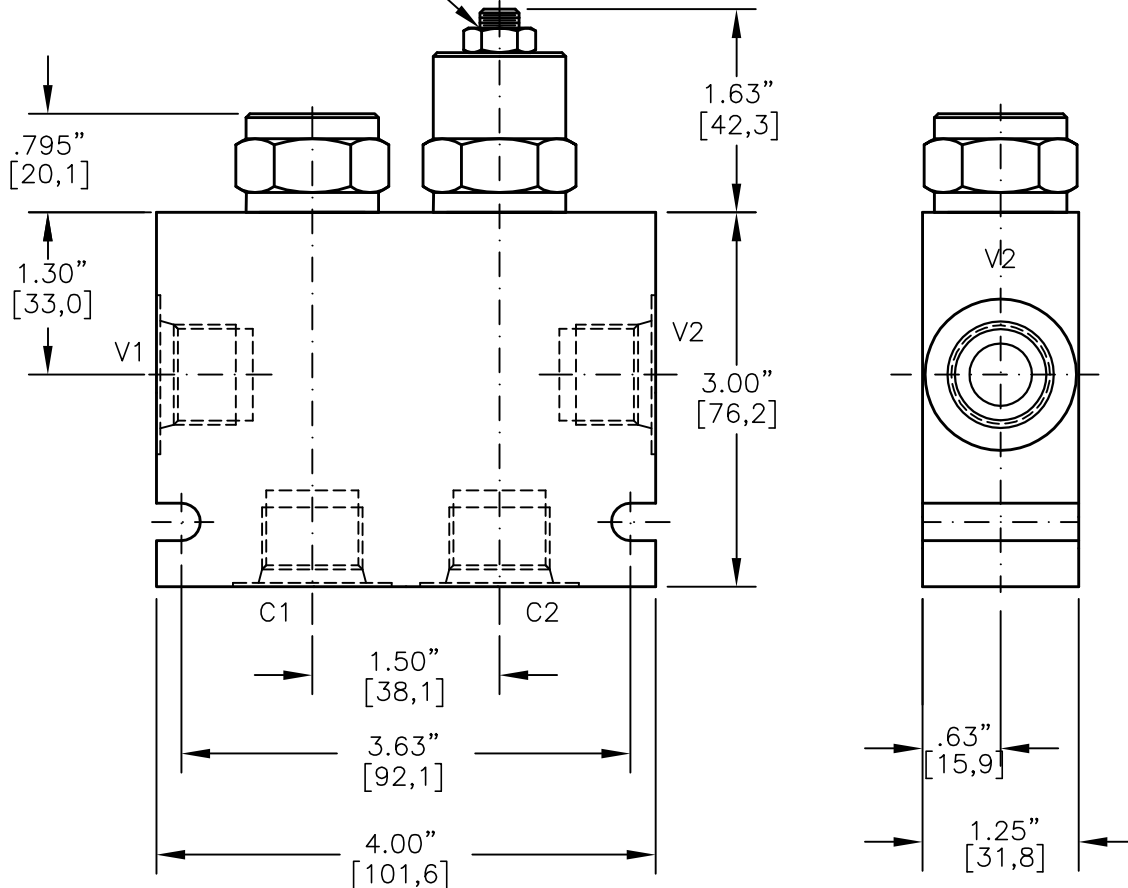




# DUAL PILOT OPERATED CHECK VALVE POPPET TYPE, PILOT TO OPEN, 3 TO 1 PILOT RATIO.



"M" MANUAL LOAD RELEASE



## DPOC-10-X-X-X-XXX

BASIC

SIZE

10 = 7/8"-14 UNF

SEALS

N = BUNA "N"

V = VITON

ADJUSTMENT

F = FIXED

M = MANUAL RELEASE

CRACK PRESSURE

010 = 10 PSI

030 = 30 PSI

060 = 60 PSI

PORTS

03BX = G 3/8" BSPP

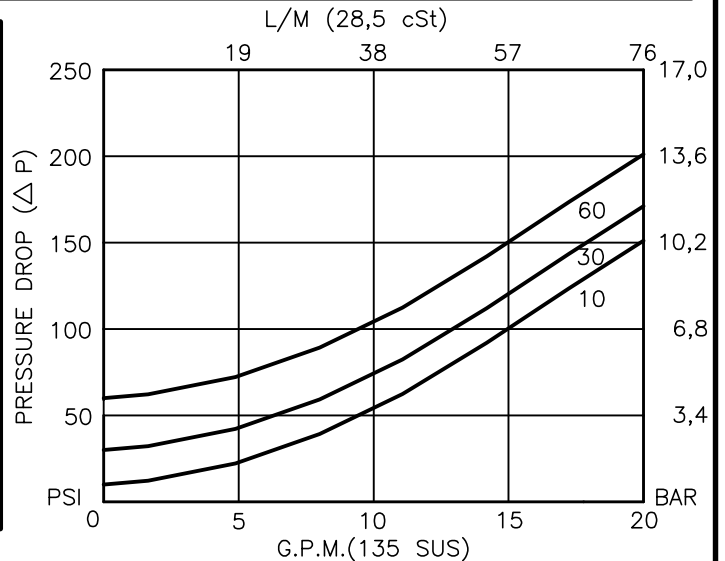
04BX = G 1/2" BSPP

08TX = SAE - #8

10TX = SAE - #10

"A" - ALUM. HOUSING

"S" - STEEL HOUSING





## DUAL PILOT OPERATED CHECK VALVE

### POPPET TYPE, PILOT TO OPEN, 3 TO 1 PILOT RATIO.

#### DESCRIPTION

This unit is a cartridge type, guided poppet, with cross line pilot, dual hydraulic pilot operated check valve, for use as a blocking or load holding device for high pressure applications.

#### OPERATIONS

This valve allows free flow from port V1 to port C1 and V2 to C2 then blocks reverse flow until a pilot pressure is sensed at pilot ports which are connected to ports V1 and V2 therefore opening flow from port C1 or port C2.

This pilot operated check valve has a 3 to 1 pilot ratio, meaning that it takes at least one-third of the load pressure held at port 1 that is required at port 3 to open the valve.

#### FEATURES AND BENEFITS

A low friction seal on pilot piston is standard.  
A separate heavy spring assures fast return of the pilot piston for a very quick, reliable and positive valve re-seat.  
Optional screw type manual load release is available.  
All external carbon steel parts are plated for longer life against the elements.  
All cartridge valves are 100% functionally tested.  
Industry common cavity.

#### SPECIFICATIONS

OPERATING PRESSURE: 5,000 PSI [350 Bar]

PROOF PRESSURE: 10,000 PSI [700 Bar]

FLOW: 18.0 GPM [70 l/m] nominal. See performance chart.

PILOT RATIO: 3 TO 1

INTERNAL LEAKAGE: 5 drops per minute maximum @ 5,000 PSI [350 Bar]

VALVE HOUSINGS: 2500 PSI [175 Bar] = Aluminum - Anodized.

5000 PSI [350 Bar] = Steel - Unplated.

OPERATING TEMPERATURE: -40° to +250° F. [-40° to +120° C.]

OPERATING MEDIA: All general purpose hydraulic fluids such as MIL-H-5606, SAE-#10, SAE-#20, etc.

INSTALLATION: No restrictions.

SEAL KIT: SKN-1028 Buna "N"

SKV-1028 Viton

WEIGHT: 1.85 lb [.92 kg].

VALVE CAVITIES: #C1025, See Page 0-022.0.